

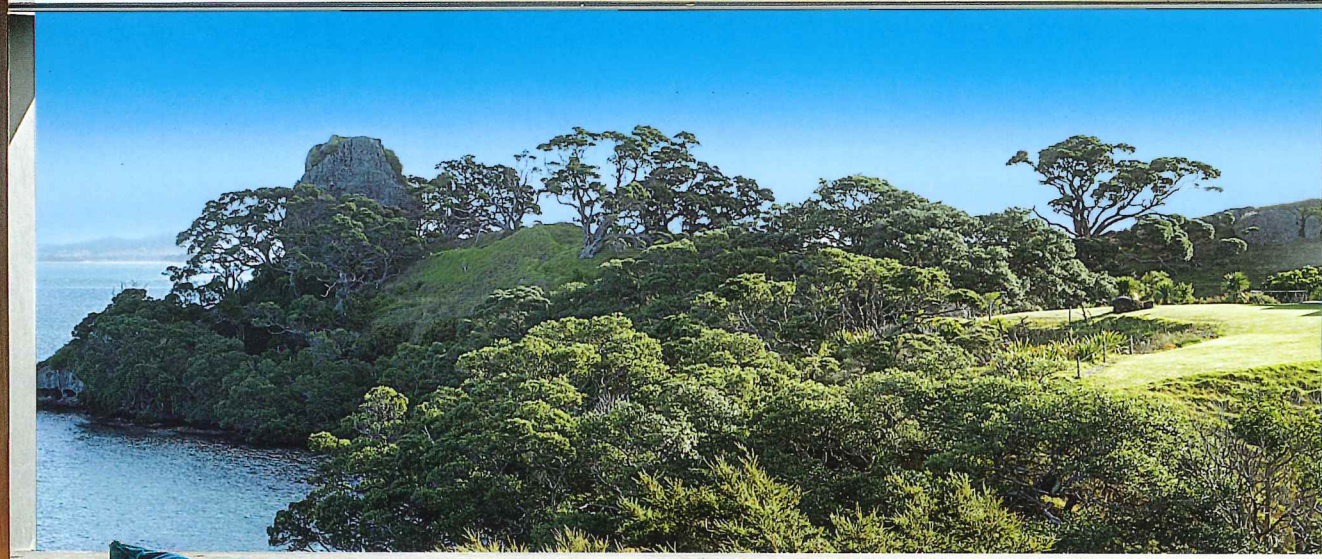
NEW ZEALAND RESIDENTIAL ARCHITECTURE AND DESIGN

# HOUSES

*Inside 10 of New Zealand's Best Homes*

**MATERIAL SELECTION**

Designers explain their choice of top building materials



**WORKING WITH AN ARCHITECT**

A homeowner's account of building their home and why use an architect

**NATURAL AND COASTAL**

5 of the best houses by Dunedin architect Francis Whitaker

ISSUE 38 - \$11.90 - SUMMER 2015

ISSN 2253-3311 04



9 772533 31002



HOUSING AWARD

# Castle Rock HOUSE by Herbst Architects

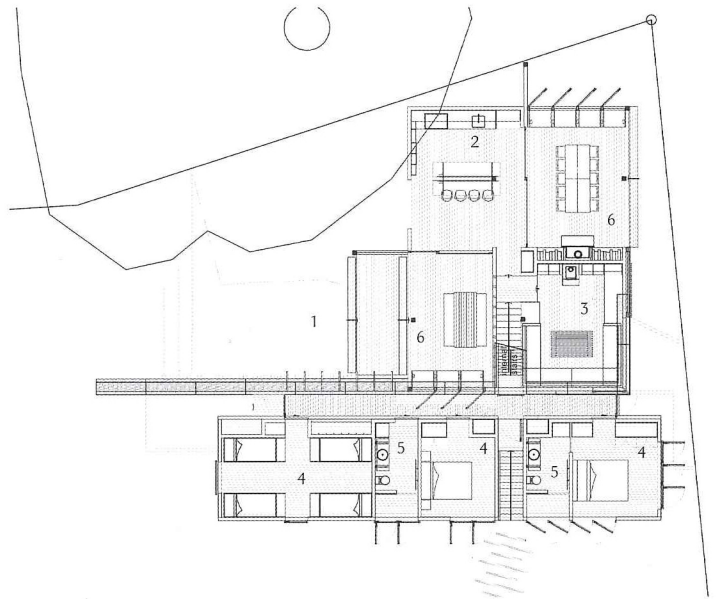
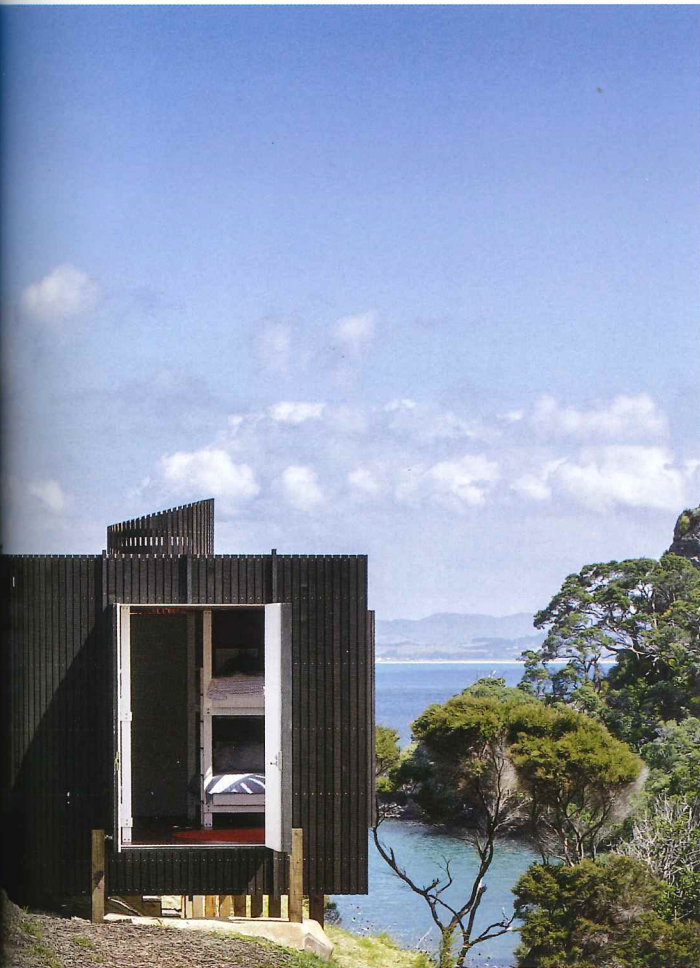
• NORTHLAND •

Citation by New Zealand  
Architecture Awards Jury  
Photography by Patrick Reynolds

**S**ited beautifully above a beach and below a mountain and next to a mature pohutukawa, this bach with its sibling pavilions – one for living, the other for sleeping – is approached on foot along an existing sheep track. The arrival strategy puts cars in their place and signals the architects' belief that, at a holiday house, convenience is secondary to the enjoyment of physical experience. The bach does require some exercise of its inhabitants – screens and shutters may be manipulated to provide shelter, shade, warmth and light – but rewards them with a range of animated spaces to suit most moods and climatic circumstances. In this project, the bach type has been pulled apart and expertly reconstructed as a summer encampment: that most historically resonant form on New Zealand's north-eastern coast.







- 1 Entry
- 2 Kitchen
- 3 Living
- 4 Bedroom
- 5 Bathroom/ensuite
- 6 Covered deck

